

HOT SPOT® COLLECTION



Frog® In-Line
Sanitising System



FiberCor®
High-Density Insulation



Moto-Massage®

TX



*Shown with Alpine White Shell
and Storm Cabinet.*

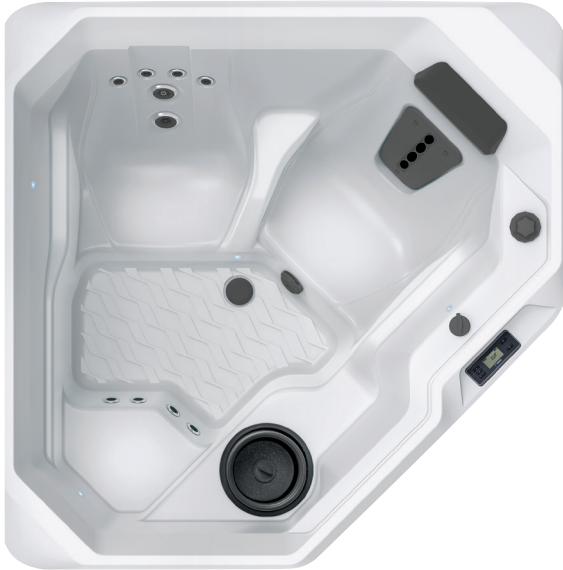
People	Seating	Jets	Voltage
2 Seats	Open	11 Jets	240 V

Size
183 × 183 × 74 cm

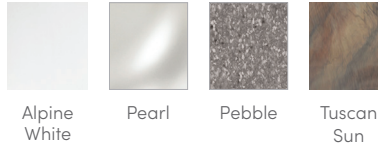
Water Care
FROG® In-Line Cartridge Ready

HOT SPOT® COLLECTION

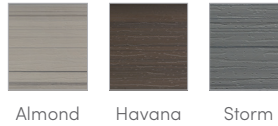
TX



SHELL COLOURS*



CABINET COLOURS*



COVER COLOURS



LEGENDARY MASSAGE

11 Personalised-Control Jets

- 1 Moto-Massage® jet
- 1 Directional Hydromassage jet
- 1 Rotary Hydromassage jet
- 8 Directional Precision™ jets

EASY WATER CARE

Water Care System FROG® In-Line Cartridge Ready

Filtration System 2.8m², top loading

LEADING ENERGY EFFICIENCY

Jet Pump Wavemaster® 9200
Two-Speed
2.5 HP, continuous duty
5.2 HP, breakdown torque

Circulation Pump SilentFlo 5000® for quiet continuous filtration (optional)

Heater No-Fault™, 2,000w/240V

Insulation FiberCor® Insulation; Certified to California Energy Commission (CEC) and APSP 14 energy efficiency standards for portable spas

Cover 9 cm to 6 cm cm tapered,
24 kg/m³ density foam core

SIZE

Dimensions 183 × 183 × 74 cm

CAPACITY

Seating Capacity 2 seats

Water Capacity 720 litres

Weight 290 kg dry; 1,165 kg filled**

ADDITIONAL FEATURES

Smart Spa Technology Hot Spring Spas App, Powered by the Connected Spa Kit

Cover Lifters CoverCradle™, CoverCradle II, or UpRite™

Steps Hot Spot Collection Step (Almond, Havana, and Storm), Polymer Step (Ash, Black)

Entertainment Wireless Sound System

Control System IQ 2020™ with LCD control panel
240v/16amp, 50Hz

Lighting System Interior: 6 multi-colour LED points of light
Exterior: 4 multi-colour LED points of light